

Help Students Unlock the Door to Career Readiness

Providing real-world career learning opportunities is the key to success

Every student will have a unique path to the career that is the best fit for them. Whatever path they take, the goal is that all paths lead to a fulfilling and meaningful career.



As work-based learning requirements expand, many schools and districts are looking for ways to expose students to career exploration and real-world learning opportunities. The need to connect students to local workforce opportunities has grown due to the current skills gap in the economy.

61% of employers face challenges filling skilled worker vacancies

8M workers lack necessary credentials

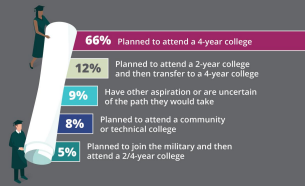
6.1M jobs are unfilled

Trends in Career Readiness

Students begin to connect the dots to their eventual career throughout middle school and early high school.

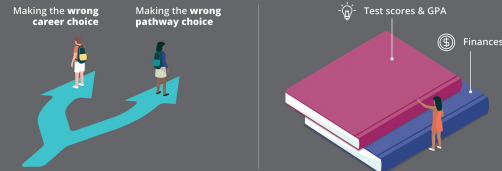
Student's Career Pathway Aspirations

When asked what pathways they will take to reach their career aspirations, students stated:



Perceived Student Obstacles

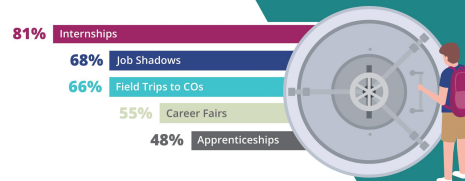
When asked what obstacles they may face in achieving their career goals, the top student concerns were:



Students' Desired Career Learning Opportunities



However, **81% of students** state that they would like access to more real-world learning opportunities, like internships.



Preparing Students With Real-World Career Learning

To ensure students have the skills and preparation to enter the workforce after their chosen pathway, schools and districts can:

Connect career instruction and postsecondary data

Help students plot out the best pathway to prepare for their chosen careers



Get creative when providing experimental career learning

Connect students with local employers to experience job shadows, internships, field trips, etc.

Help students identify their strengths and interests

Provide students tools to access and understand who they are



To learn more, download the white paper [Trends in CCLR](#).