

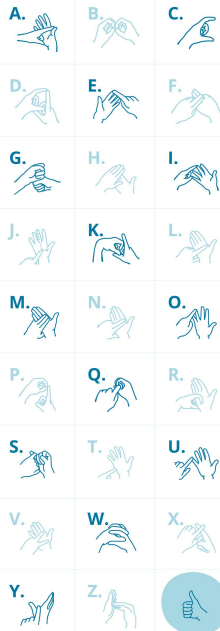
SIGN LANGUAGE...

is a visual means of communicating using gestures, facial expressions and body language. Sign Language is used mainly by people who are DEAF or have hearing impairments.

WHAT IS SIGN LANGUAGE?

FINGERSPELLING... is a method of spelling words using hand movements. The fingerspelling alphabet is used in sign language to spell out names of people and places for which there is not a sign.

READY? LET'S START WITH THE LEFT HAND...



OK, TRY READING THIS



Got it? Scroll down for the answer...

DID YOU KNOW?

Accounts as early as the 15th century describe deaf people using signs. The first description of these signs appears in the Marriage Register of St Martin's, Leicester, 1376.

BSL isn't simply English with hand signs. It is a different language with its own grammar and sentence construction. What you would say "what is your name?" in English, a BSL user would sign, "your name, what?"

OK? LET'S TRY THE RIGHT HAND



HOW DID YOU GET ON?

THE ANSWER TO OUR LITTLE TEST WAS:

THANKS

BRITISH SIGN LANGUAGE (BSL)

Within Britain the most common form of sign language is called British Sign Language (BSL). BSL is the preferred language of around 145,000 people within the UK (2011).

DID YOU ALSO KNOW?

A RECOGNISED LANGUAGE

After a big campaign BSL was finally recognised by the UK Government as an official minority language in 2003.

ENJOY SIGNING!